

Armless Pendant OSA 8004200B

The armless pendant is a fixed overhead pendant designed for intensive medical care. It features a rotational service unit and serves as an auxiliary pendant in operating theatres.

This single console is directly connected to the ceiling and is particularly suitable for use in small rooms, allowing easy access to medical equipment at the point of care.

With its modular design and high load capacity this fixed unit can carry a variety of instruments for the ICU and operating rooms.



Features & Benefits

- Easy rotation & positioning.
- Cable management - the neat and organized cables and their hanging system from the ceiling prevent hospital-acquired infection.
- Frictional brakes in the bearing assembly prevent inadvertent creeping movement.
 - Bearings are maintenance-free.
- All accessories are detachable and interchangeable.
- Maximum access around the patient.
- The service head provides optional docking facilities to various carts carrying instruments.
- The service head provides electric sockets, medical gas outlets, gauges, equipotential pins, connectors for data transfer, video recording telephone, intercom, nurse call & code blue.
- The service head has mounting slides on four sides for various accessories:
 - Shelves size 550x500 may be front, sides, or back mounted.
 - Drawers under the shelf are available.
 - Stainless steel IVF poles with height-adjustable slow descending mechanism. 3 hook rods may be attached to the service head.
 - Height adjustable hanging rails may be mounted on the poles of the service head to carry oxygen and vacuum therapy equipment.
 - An endoscopic equipment holder can be added and clamped to a rail on the side of the service head.



Technical Data

- Max. load: 120 kg
- Rotation angle: 300°
- Electrical Sockets: Up to 16 units
- Equipotential pins: Up to 12 units
- Data sockets: Up to 12 units
- Gas Outlets: Up to 10 units
- Pressure gauges: up to 6 units
- Service head height: 600/800/1000mm or by customer request.
- Brakes: Mechanic
Pneumatic brake for service head rotation - optional

Notes:

- 1) The load G2 includes the weight of the service head and medical equipment.
- 2) Customized lengths or higher socket numbers are available - on request.

Optional Add Ons

- IV poles
- Medical Shelf/Tray
- Monitor mounting arms
- Screen & keyboard arm
- Endoscopic equipment holders
- Bottom hanging rail

The Armless pendant meets the requirements of: NFPA99, EN ISO 11197, and 7396-1 standards.

Silbermann's Quality Management System:

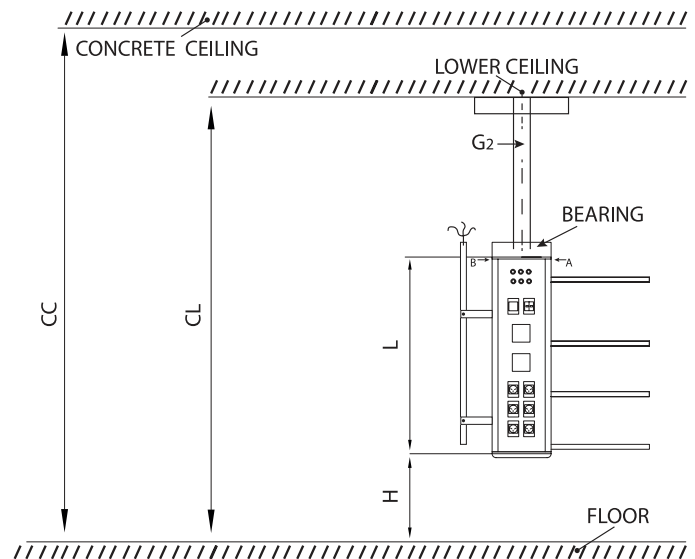
- EN ISO 13485-2016
- ISO 9001-2015

The Product is CE marked

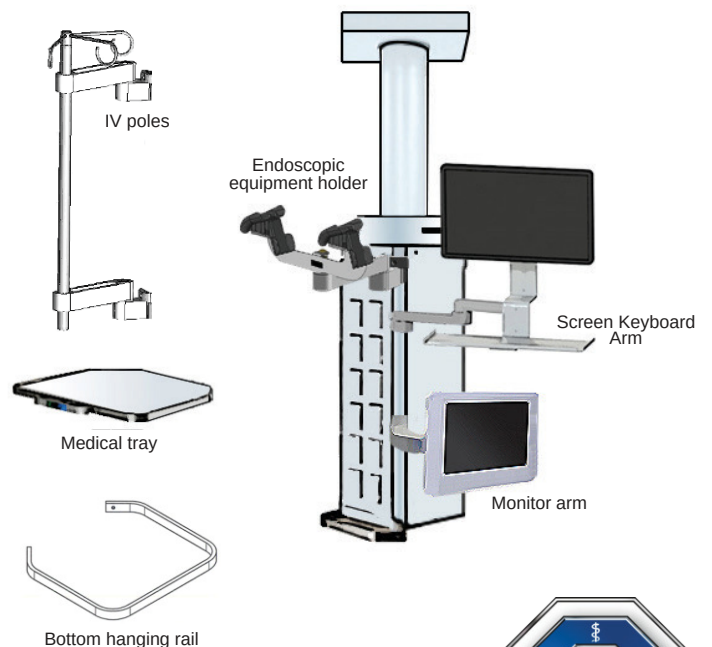


Diagram

DESIGN GUIDE



Optional Add Ons



SILBERMANN Technologies Ltd.

Address: #5 Harakevet st. POB 4605, Petah-Tikva, 4900715, ISRAEL
 Tel: +972-3-9309186 | Fax: +972-3-9315721
 E-Mail: info@silbermnn.com, www.silbermnn.com

